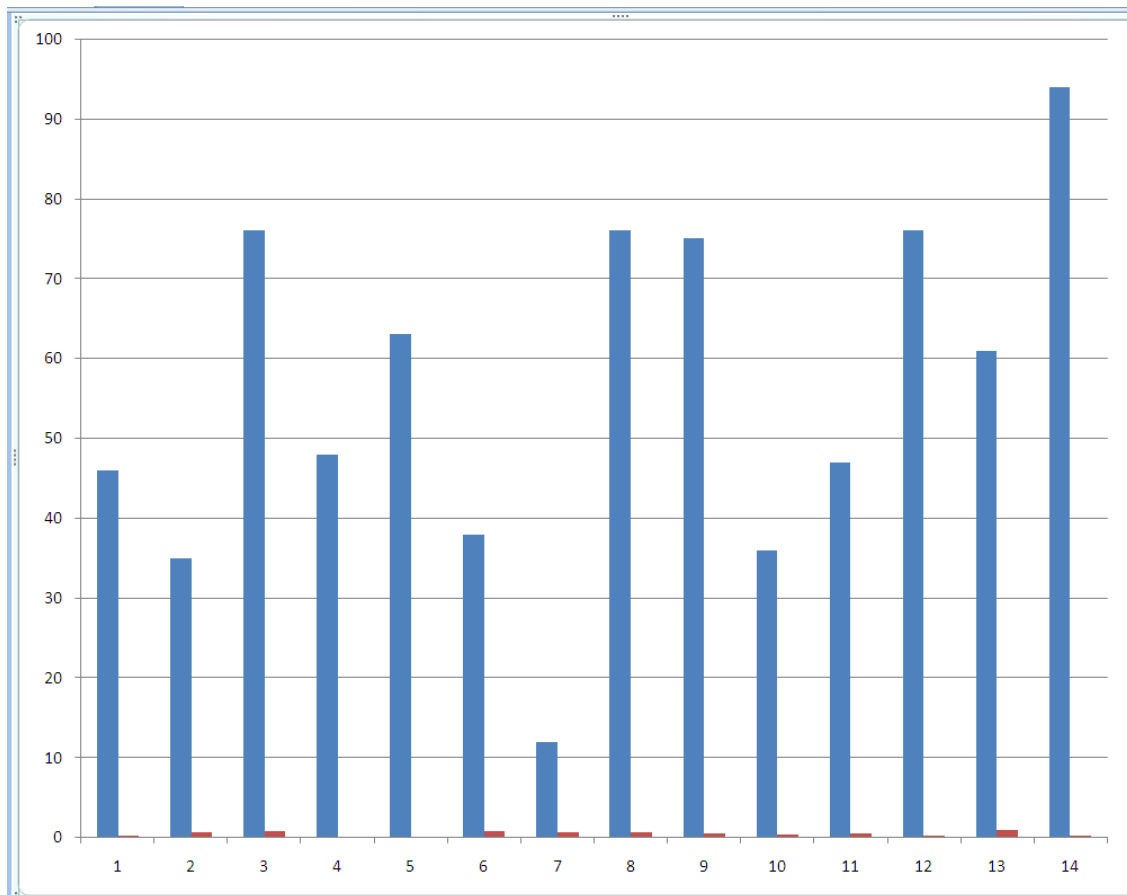


Add Data Label for a Single Point

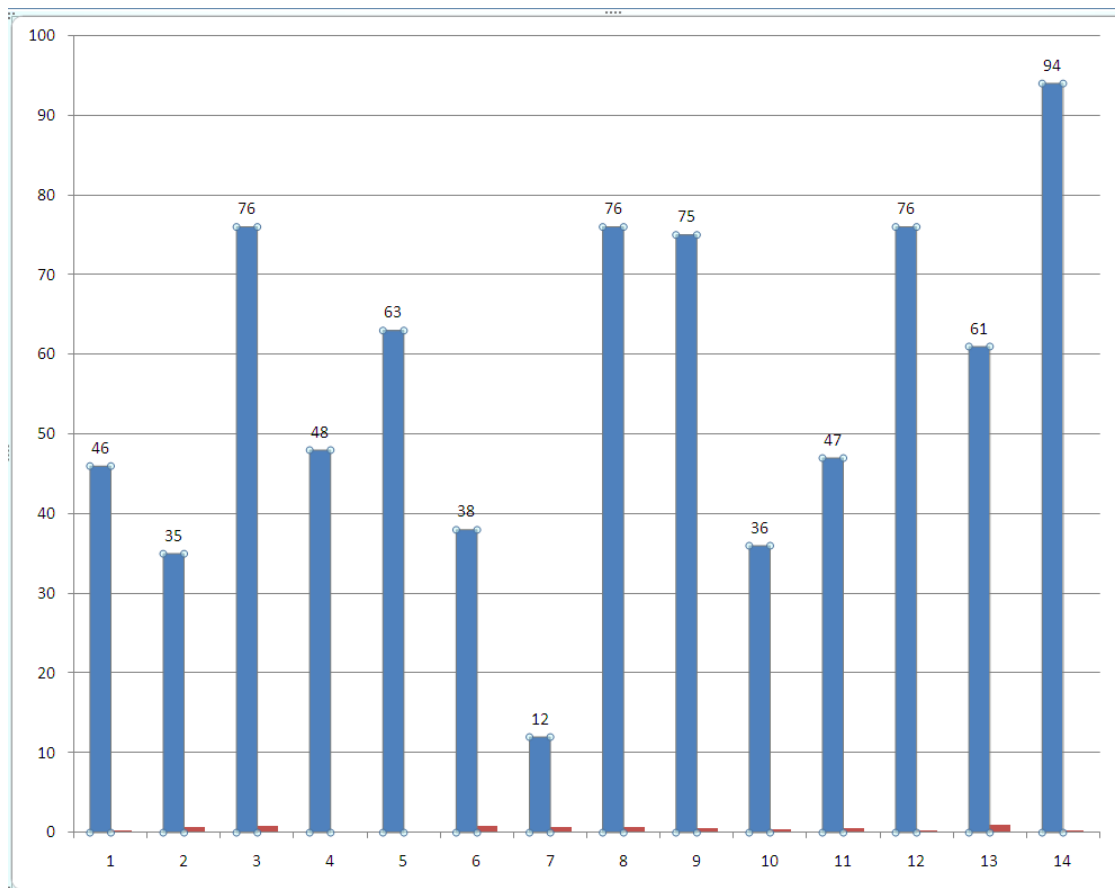
Step 1

Sometime you need add a data labels for the points on a chart, and sometime you

need add just one label for one point. To do this, first we need a graph, for example you have a graph like this one:



And you want to add data label for all blue color bars, you just need to **click** on one of them **once**, and then **right click**, select **Add Data Labels**, then your chart will become this:

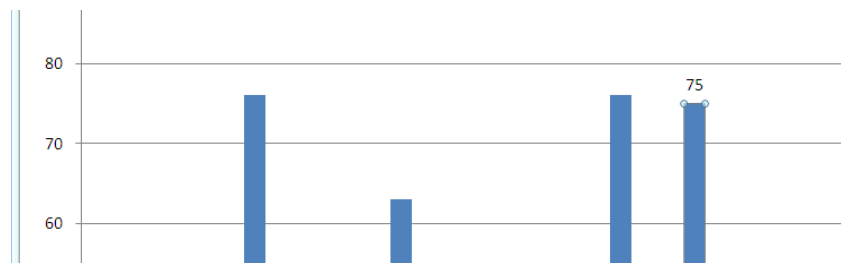


Step 2

What we have right now is the Y-axis value for each bar labeled on top of it, if we

only want one of them labeled, we need to click on the bar you want to be labeled twice before Add Data Labels.

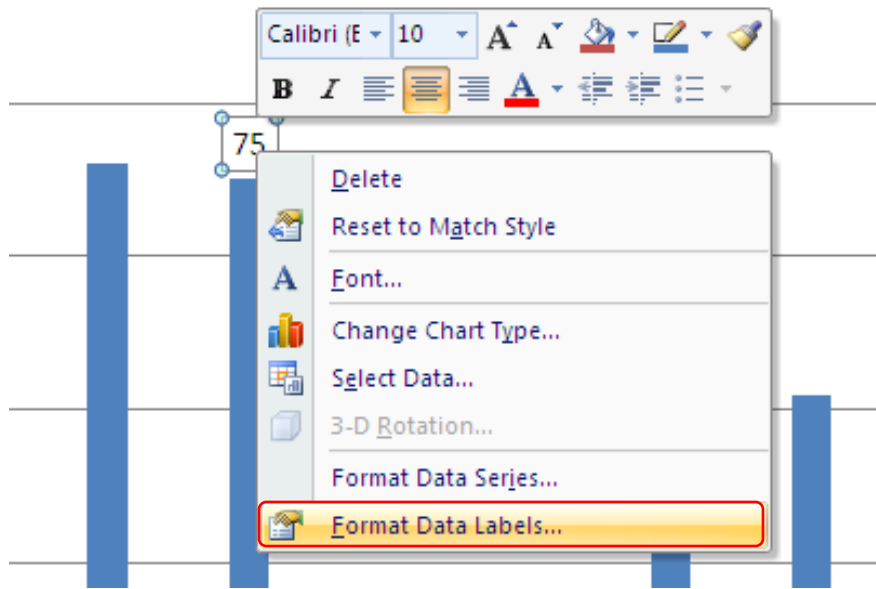
For example we have this bar labeled. Notice this is the Y-axis value right now.



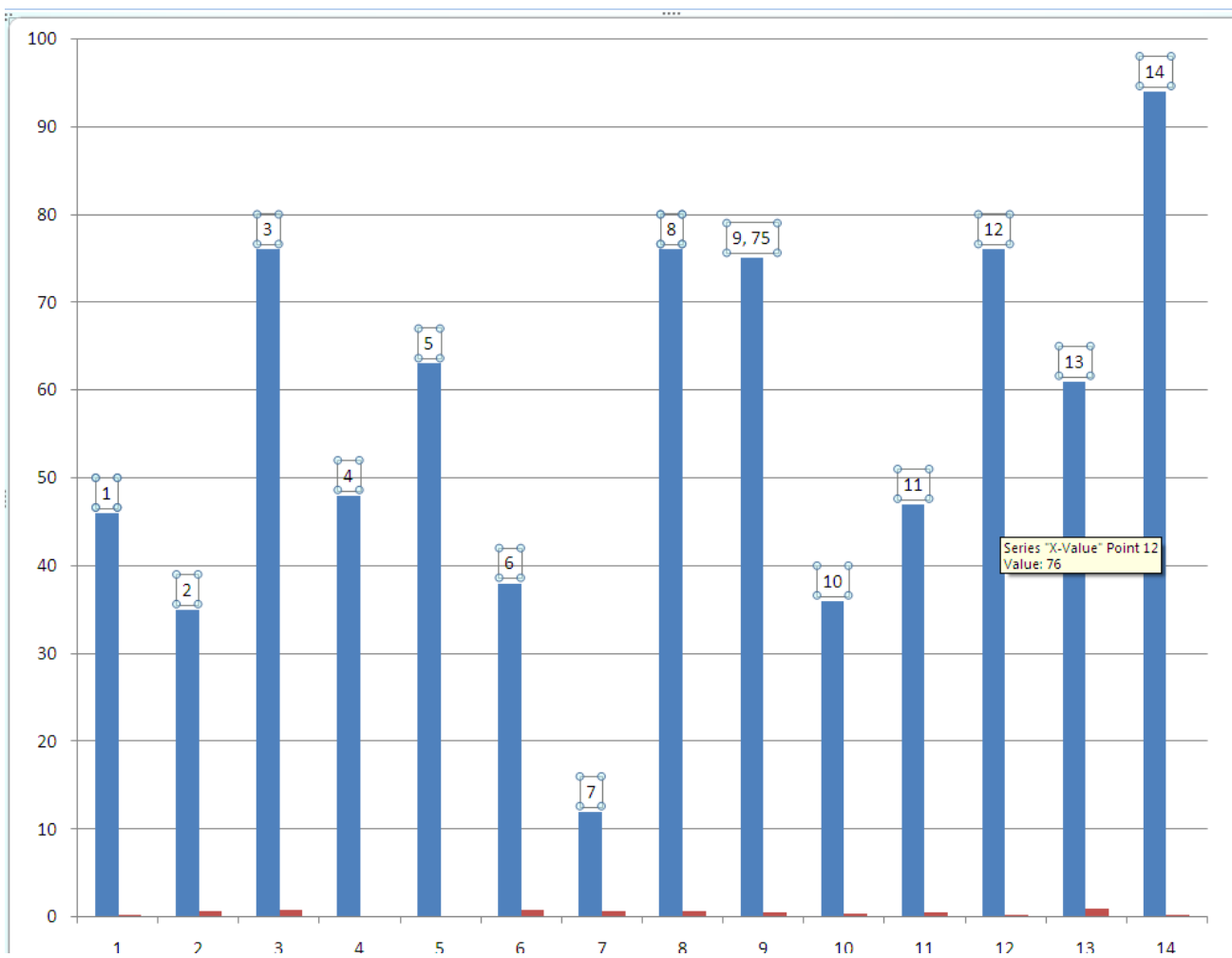
Step 3

Now we want to change the label into the X-axis value. First we **click** on the label

we have right now **once**, which is "75", then we right click and select **Format Data Labels**.



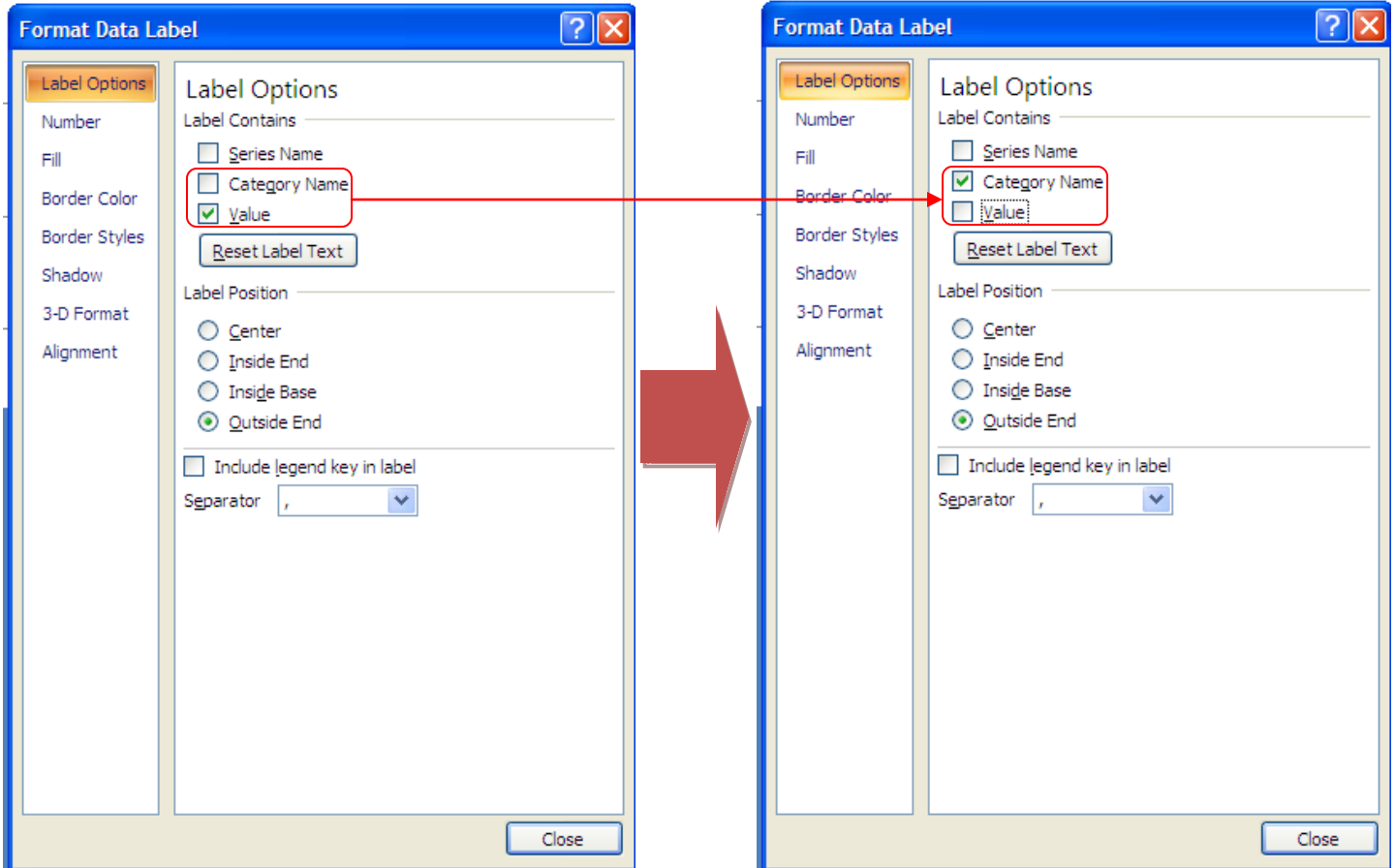
Then check the **Category Name** (sometime it's called X-axis value), then close the window. Now you will see all the blue bars are labeled with its X-axis value. Just like this:



Step 4

If we only want one of the bar labeled with its X-axis value, we need to click the "75"

twice, and then go to the **Format Data Labels** window. This time you will need to **check** the **Category Name** and **uncheck** **Value**, close the window.



Then you have a chart with only one bar labeled with its X-axis Value.

