

Computer Science 1401: Lecture #11

Artificial Intelligence

ARTIFICIAL INTELLIGENCE: THE IMAGE

ARTIFICIAL INTELLIGENCE: THE REALITY

ARTIFICIAL INTELLIGENCE AT THE MOVIES:
A.I. Artificial Intelligence (2001)

Artificial Intelligence: The Image



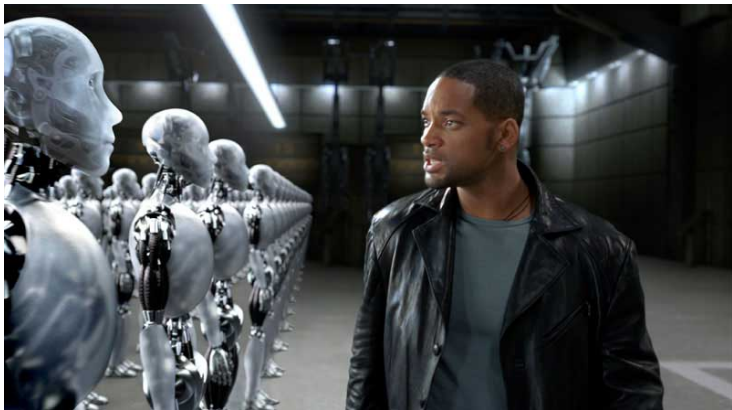
Electric Dreams (1984)

Artificial Intelligence: The Image (Cont'd)



WALL-E (2008)

Artificial Intelligence: The Image (Cont'd)



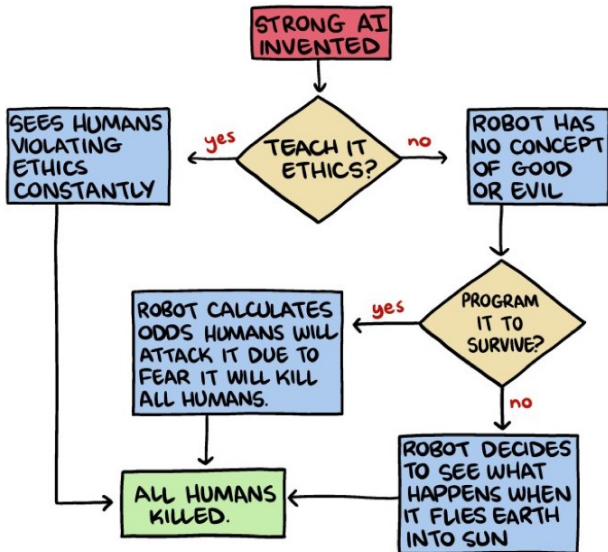
I, Robot (2004)

Artificial Intelligence: The Image (Cont'd)



The Terminator (1984)

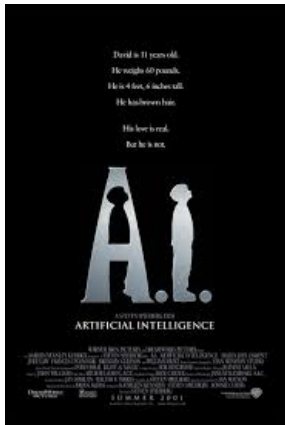
Artificial Intelligence: The Image (Cont'd)



Artificial Intelligence: The Reality

- Two approaches to date wrt dealing with Strong AI:
 - **Protect AIs:** Give Strong AIs human-level legal status (e.g., 2017 EU study) and freedoms.
 - **Protect Humans:** Build technological restrictions into Strong AIs to ensure that they cannot harm humans, e.g., Isaac Asimov's Three Laws of Robotics (1942):
 1. A robot may not injure a human being or, through inaction, allow a human being to come to harm.
 2. A robot must obey the orders given it by human beings except where such orders would conflict with the First Law.
 3. A robot must protect its own existence as long as such protection does not conflict with the First or Second Laws.

Artificial Intelligence At The Movies: *A.I.: Artificial Intelligence* (2001)



- Based on 1969 short story by Brian Aldiss.
- In development by Stanley Kubrick starting in early 1980s; held back by immature CGI.
- Handed to Stephen Spielberg in mid-1990s after successful *Jurassic Park* CGI; sentimental bits are not Spielberg's but were in Kubrick- approved screenplay.
- Commercial and critical success.